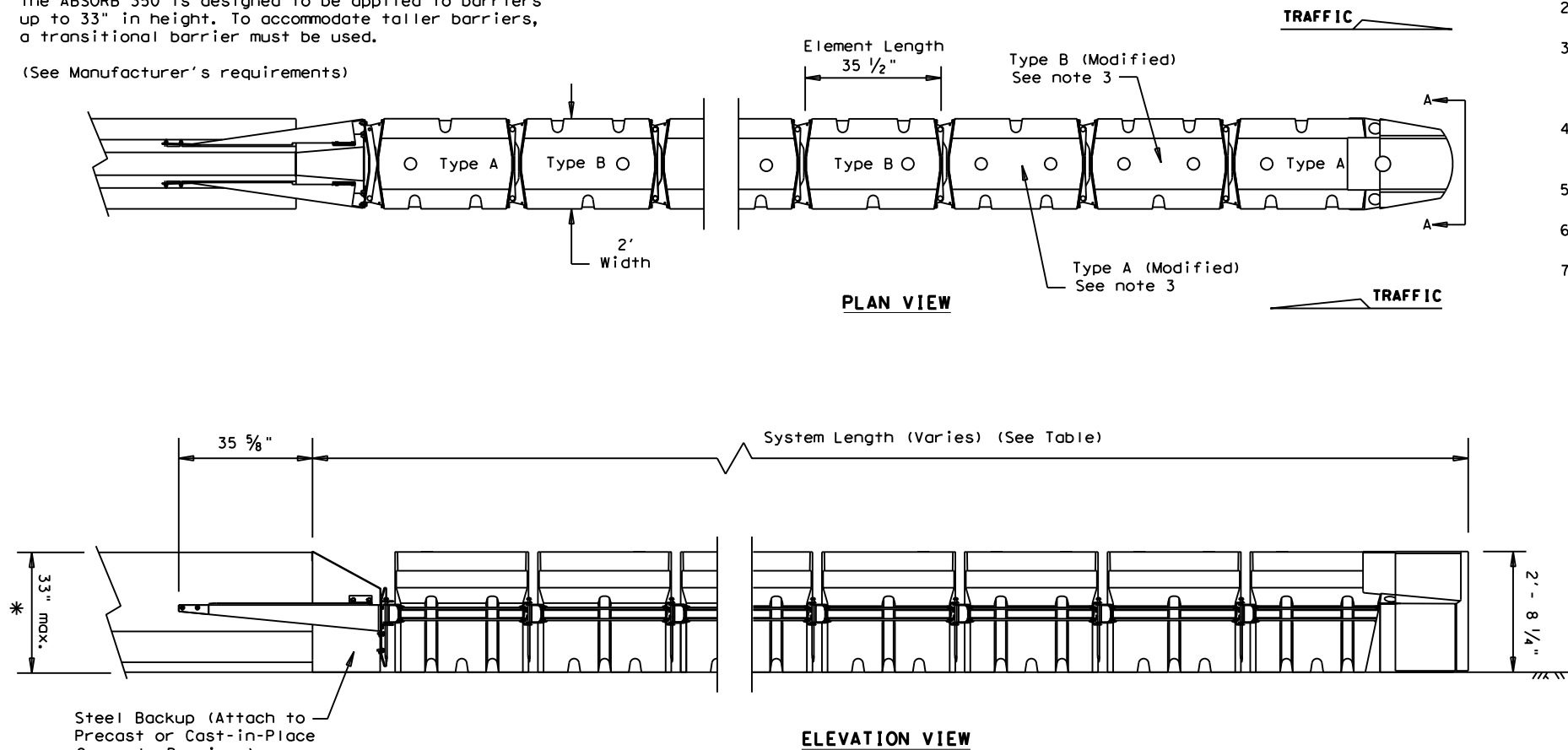


DISCLAIMER: The use of this standard is governed by the "Texas Engineering Practice Act". No warranty of any kind is made by TxDOT for any purpose whatsoever. TxDOT assumes no responsibility for the conversion of this standard to other formats or for incorrect results or damages resulting from its use.

* The ABSORB 350 is designed to be applied to barriers up to 33" in height. To accommodate taller barriers, a transitional barrier must be used.
(See Manufacturer's requirements)



See Manufacturer's Product Manual for Additional Details.

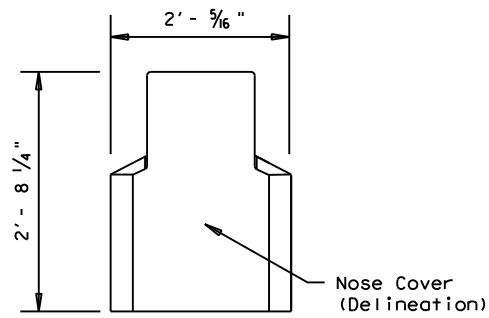
BACKUP SUPPORT
Steel Backup (Attach to Concrete Barriers, Precast or Cast-in-Place)

TRANSITION OPTIONS
Steel Backup to Vertical Wall
Steel Backup to Concrete Traffic Barriers

Backup and Transition types are shown elsewhere on the plans (i.e. Attenuator location details or in the general notes).

TEST LEVEL	NUMBER OF ELEMENTS	SYSTEM LENGTH (approx.)
TL-2	5	20' - 0"
TL-3	9	32' - 0"

NOTE: The ABSORB 350 is only to be used in temporary (Work Zone) locations.



SECTION A-A

NOTE: Nose Piece delineation orientation, is shown elsewhere on the plans.

GENERAL NOTES

- For specific information regarding installation and technical guidance of the system, contact: Lindsay Transportation Solutions - Barrier Systems, Inc. at (707) 374-6800, 180 River Road, Rio Vista, CA 94571
- The ABSORB 350 system is only approved for use in (TEMPORARY WORK ZONE) locations.
- The ABSORB 350 is a water filled non-redirective, gating crash cushion that does not need to be attached to a foundation and can be installed on top of concrete, asphalt, or any surface capable of bearing the weight of the system.
- Modified Type A and Type B elements require drilling of an additional three-inch (3") diameter hole (as shown). See Manufacturer's installation manual for details.
- Maximum permissible cross-slope is 8%.
- The installation area should be free from curbs, elevated objects, or depressions.
- The ABSORB 350 should be approximately parallel with the barrier or C of merging barrier.

BILL OF MATERIAL

PRODUCT CODE	QTY	DESCRIPTION
B010825	1	Replacement Nose Assembly
B010830	1	Nose Piece Cover
B000303	TBD	Type A Element Assembly
B000708	TBD	Type B Element Assembly
B000706	TBD	Replacement Element Type A
B000708	TBD	Replacement Element Type B
B000520	1	Replacement Transition to PCB
A010420	TBD	Pin Link Hinge Locking
B000520	1	Transition Adapter Assembly
B000209	TBD	Strap Left Adapter
B000207	TBD	Strap Right Adapter
B000611	TBD	Adapter Hinge Plate
A000521	TBD	Anchor Bolt (U-Bolt)
B000518	1	Tapered Adapter
B020421	TBD	I Beam Adapter Female
B020420	TBD	I Beam Adapter Male
C021212	1	Transition to Link

(TBD) = To Be Determined. Depending on the System Length. (See manufacturer's product manual)

Required Information

THE USE OF THE ABSORB 350 IS RESTRICTED TO A MAXIMUM BARRIER HEIGHT OF 33 INCHES.

		<i>Design Division Standard</i>	
LTS-BARRIER SYSTEMS (ABSORB 350) (TEMPORARY WORK ZONES) ABSORB-16			
FILE: absorb16.dgn	DN: TxDOT	CK: KM	DW: VP
© TxDOT: September 2005	CONT	SECT	JOB
REVISIONS			
REVISED 03-2016 (VP)	DIST	COUNTY	SHEET NO.

SACRIFICIAL

DATE:
FILE: