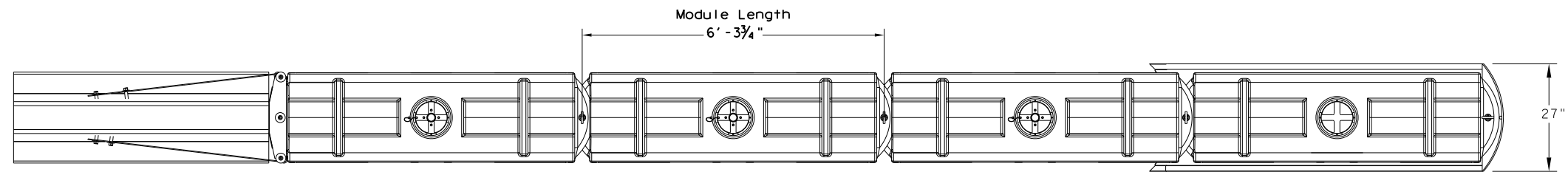
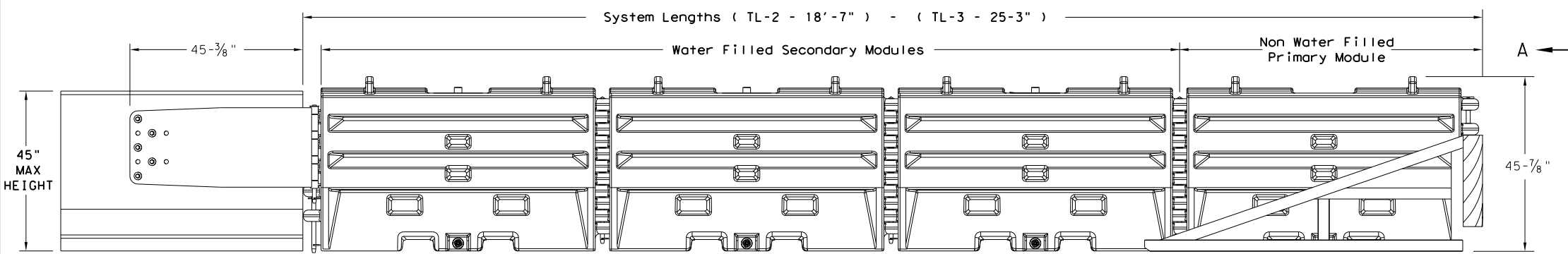


DISCLAIMER: This standard is governed by the "Texas Engineering Practice Act". No warranty of any kind is made by TxDOT for any purpose whatsoever. TxDOT assumes no responsibility for the conversion of this standard to other formats or for incorrect results or damages resulting from its use.

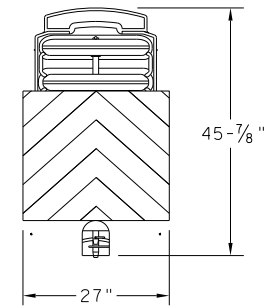
DATE: FILE:



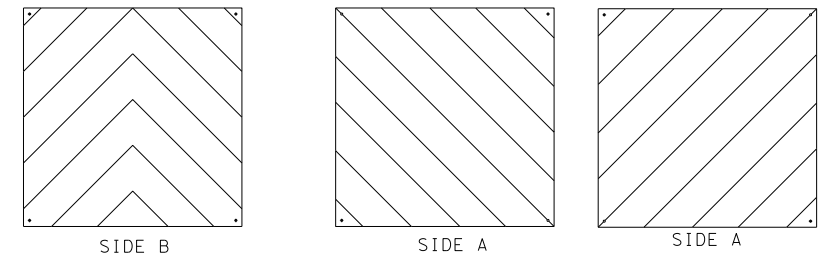
PLAN VIEW



ELEVATION VIEW

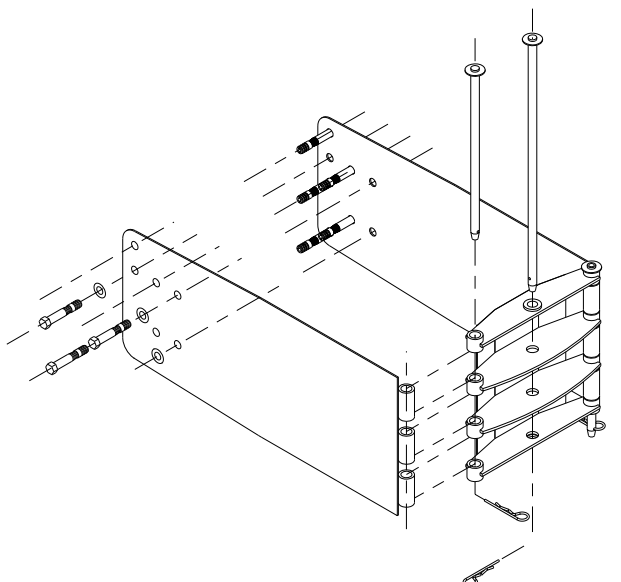


Section A-A



Nose Sheeting Panel Delineation

TEST LEVEL	NUMBER OF SECONDARY MODULES	SYSTEM LENGTH
TL-2	2	18' 7"
TL-3	3	25' 3"



SLED Transition Components for Attachment to CMB

TRANSITION OPTIONS	
SLED Transition to Concrete Traffic Barrier (Temporary or Permanent)	
SLED Transition to Steel Traffic Barrier (Contact Mfgr for Proper Transition)	
SLED Transition to Plastic Traffic Barrier (Contact Mfgr for Proper Transition)	
SLED Transition to W-Beam or Thrie Beam Guard Rail	
SLED Transition to Concrete Bridge Abutment	

GENERAL NOTES

1. Refer to the installation manual for specific system assembly and module orientation. For additional information, contact Traffix, Inc. at (949) 361-5663.
2. The SLED System is approved for use in temporary (Work Zones). The SLED System is a non-redirective, gating crash cushion that does not need to be attached to the ground and can be installed on concrete, asphalt, gravel or compacted soil.
3. Maximum permissible cross slope is 8° (degrees) (14%).
4. The installation area should be free from curbs, elevated objects, or depressions.
5. The SLED system can be attached to:
 - Concrete Barrier, Temporary or Permanent, 45" Maximum Height
 - Steel Barrier
 - Plastic Barrier
 - Concrete Bridge Abutments
 - W-Beam Guard Rail
 - Thrie Beam Guard Rail

BILL OF MATERIAL			
PART NUMBER	DESCRIPTION	QTY for TL-2	QTY for TL-3
45131	Transition Frame, Galvanized	1	1
45150	Transition Panel, Galvanized	2	2
45147-CP	Transition Short Drop Pin w/ Keeper Pin, Galvanized	2	2
45148-CP	Transition Long Drop Pin w/ Keeper Pin, Galvanized	1	1
45047	Anchor Bolt, 3/4" w/ Expanding Nut	9	9
12060	Washer, 3/4" ID x 2" OD	9	9
45044-Y	SLED Yellow Water Filled Module	2	3
45044-YH	SLED Yellow "No Fill" Module	1	1
45044-S	CIS (Containment Impact SLED), Galvanized	1	1
45043-CP	T-Pin w/ Keeper Pin	3	4
18009-B-I	Fill Cap w/ "Drive By" Float Indicator	2	3
45033-RC-B	Drain Plug	2	3
45032-DPT	Drain Plug Removal Tool	1	1

Design Division Standard

**SLED
CRASH CUSHION
(Temporary, Work Zone)
SLED-14**

FILE: sled14.dgn	DN: TxDOT	CK: AM	DW: VP	CK:
© TxDOT: July 2014	CONT	SECT	JOB	HIGHWAY
REVISIONS				
DIST	COUNTY		SHEET NO.	